



Avon Building

335 W FM 544, Murphy, TX 75094



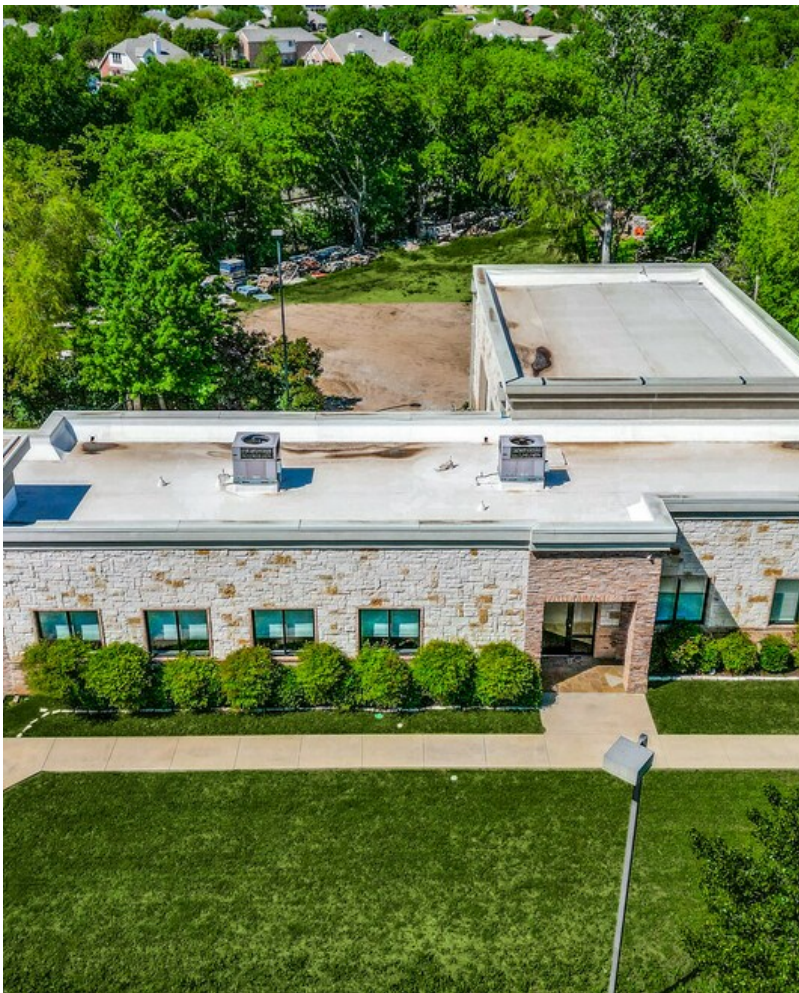
Alexander Acuña

The Acuña Group / Keller Williams Central

501 W President George Bush Hwy, Suite 125, Richardson, TX 75080

alexacuna@kw.com

(214) 728-9907



Avon Building

\$16.00 /SF/YR

Prime Commercial Retail Space Available in Murphy, Texas this exceptional commercial retail space offers a unique opportunity for businesses seeking a premium location in a thriving community. Boasting a spacious 1,948 square feet, this second-generation Avon retail store provides a versatile layout, including dedicated retail space, office facilities, a well-appointed bathroom, and a conference room. The building, characterized by its stunning stone exterior, was meticulously crafted in 2011, exuding elegance and charm. With tenant improvements negotiable, you have the flexibility to customize the space according to your specific requirements, ensuring an ideal environment for your business to thrive. Murphy's demographic profile further enhances the appeal of this...

- Newer, upscale retail building
- High Traffic count
- HHI \$157,000 and a median age of 38, indicative of a prosperous and vibrant community

For more information visit:

<https://www.loopnet.com/Listing/335-W-FM-544-Murphy-TX/31504013/>



Rental Rate:	\$16.00 /SF/YR
Property Type:	Retail
Property Subtype:	Storefront Retail/Office
Gross Leasable Area:	3,292 SF
Year Built:	2011
Walk Score ®:	59 (Somewhat Walkable)
Rental Rate Mo:	\$1.33 /SF/MO



1st Floor Ste 101

Space Available	1,948 SF
Rental Rate	\$16.00 /SF/YR
Date Available	Now
Service Type	Triple Net (NNN)
Built Out As	Standard Retail
Space Type	Relet
Space Use	Retail
Lease Term	Negotiable



335 W FM 544, Murphy, TX 75094

Prime Commercial Retail Space Available in Murphy, Texas this exceptional commercial retail space offers a unique opportunity for businesses seeking a premium location in a thriving community. Boasting a spacious 1,948 square feet, this second-generation Avon retail store provides a versatile layout, including dedicated retail space, office facilities, a well-appointed bathroom, and a conference room. The building, characterized by its stunning stone exterior, was meticulously crafted in 2011, exuding elegance and charm. With tenant improvements negotiable, you have the flexibility to customize the space according to your specific requirements, ensuring an ideal environment for your business to thrive. Murphy's demographic profile further enhances the appeal of this location, with an average household income of \$157,000 and a median age of 38, indicative of a prosperous and vibrant community.

Property Photos

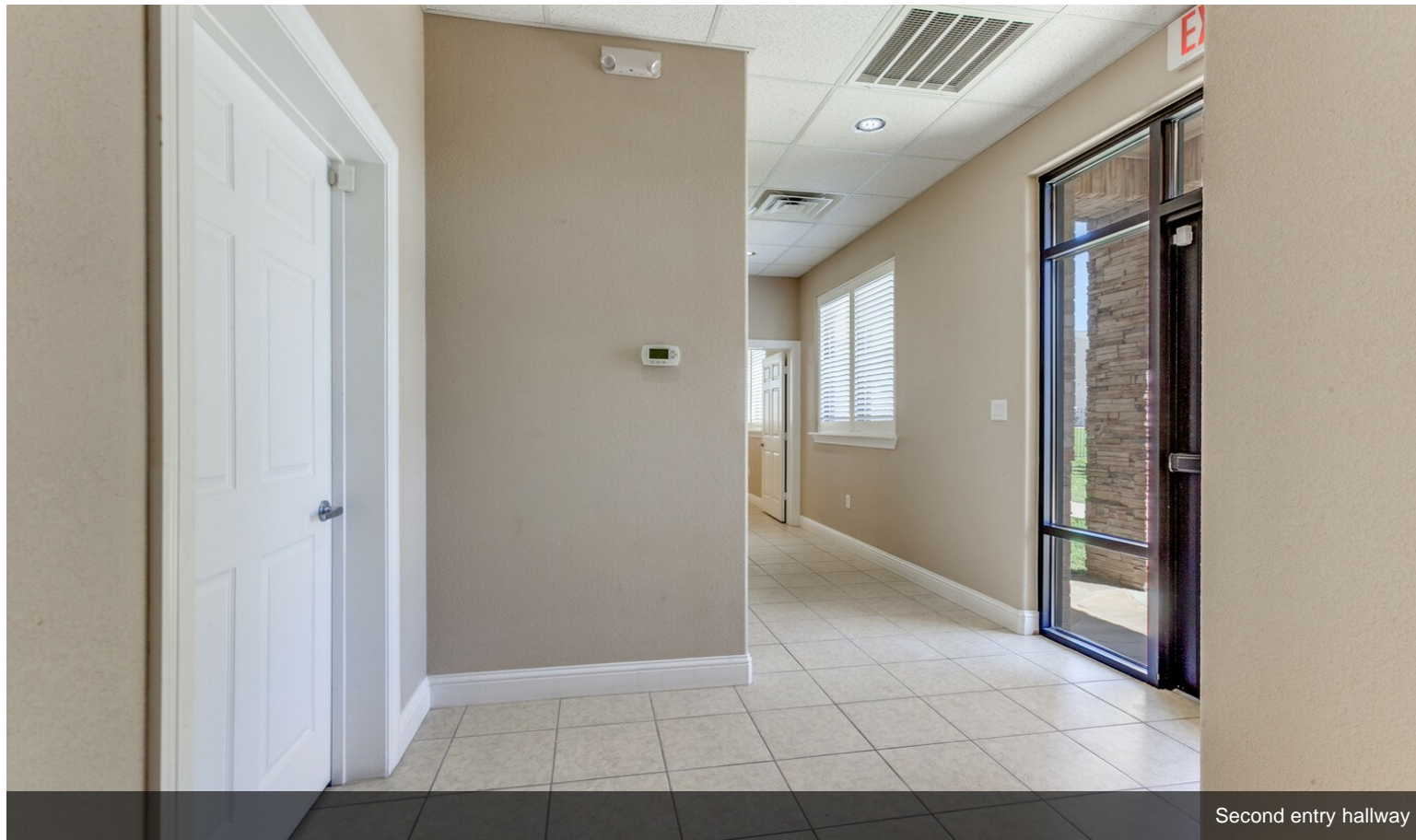


Retail Showroom/ Open Space



Retail Showroom/ Open Space

Property Photos



Second entry hallway



Office

Property Photos



Property Photos



Office

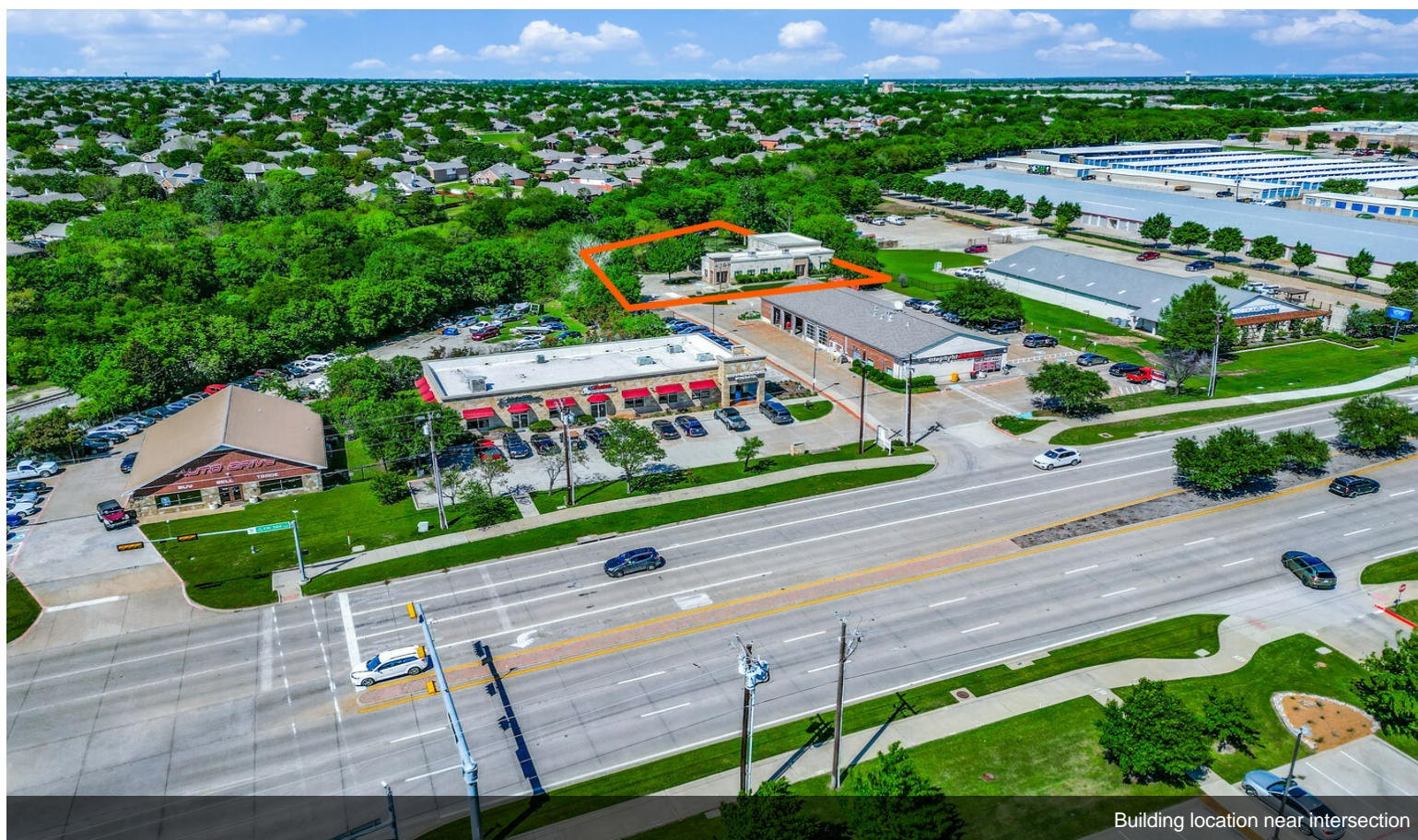


Retail with Offices

Property Photos

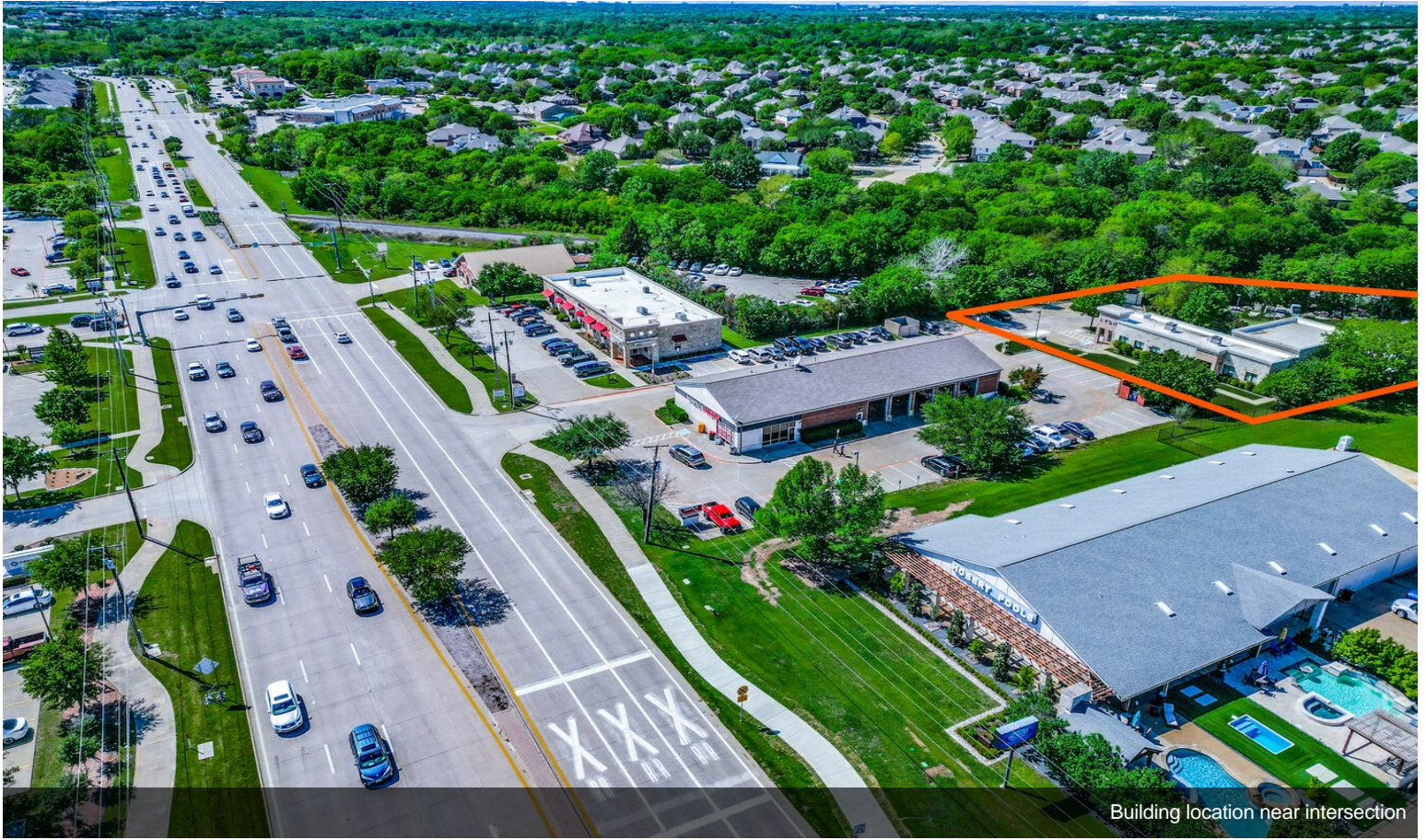


Retail with Offices

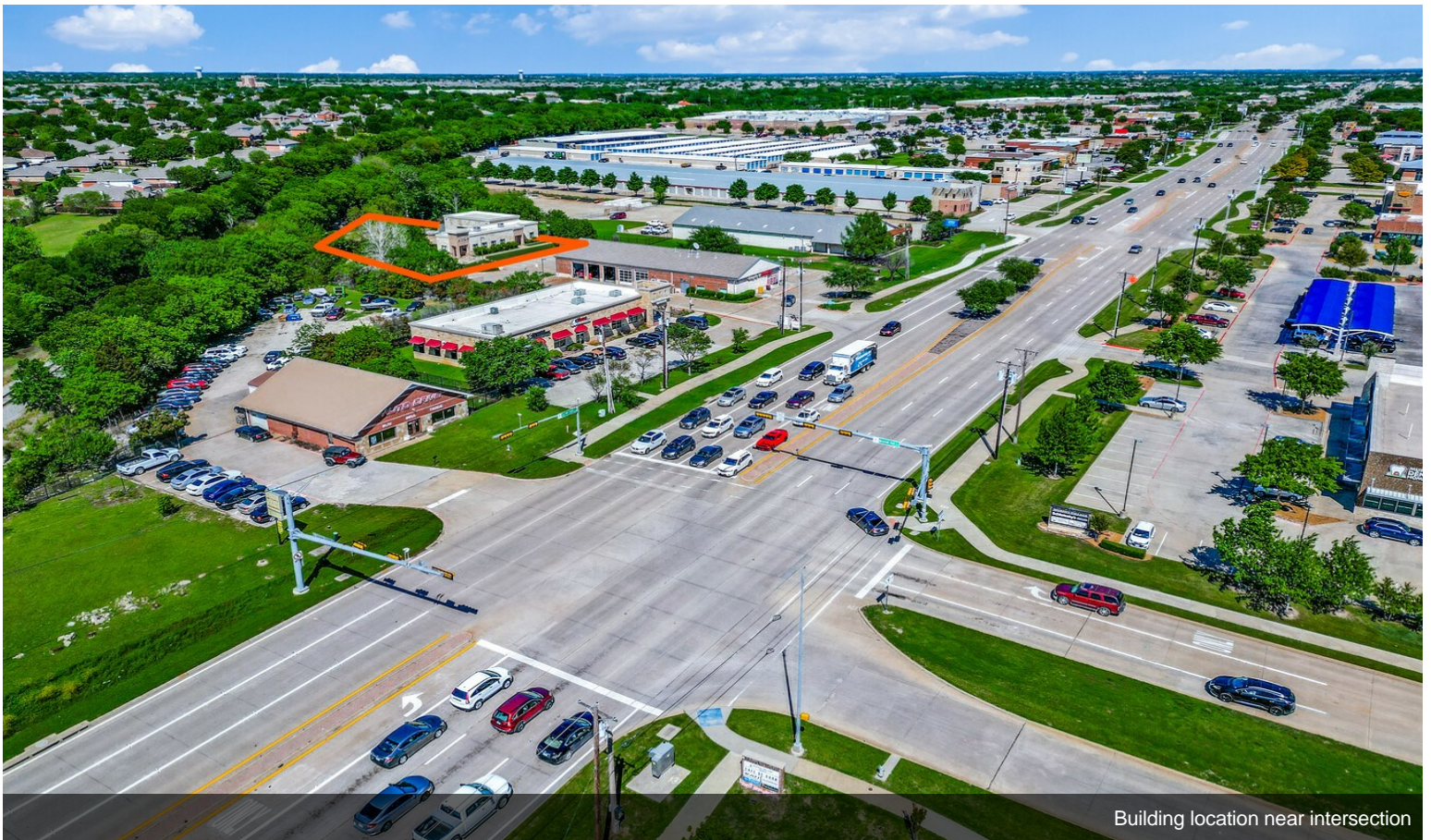


Building location near intersection

Property Photos



Building location near intersection



Building location near intersection